

GARDEN

CITY

AREA RELOCATION GUIDE



revised July 2021

Welcome Home



Welcome to Garden City and Finney County! We're glad you're here and we'd like you to stick around. No matter what brings you here, there are plenty of reasons to be excited about the Garden City area. Garden City is a great place to live, work, and play!

We've collected the information that we feel is vital to making the best life possible here. This guide is a comprehensive list of resources for our community, including Holcomb and Finney County. From housing and entertainment to education and employment, we hope you decide to make the Garden City area the place you call home.

We like it here and hope you do too! 

Table of contents

Demographics.....	3
Housing/Rentals.....	4
Education.....	5
Healthcare.....	7
Personal Care.....	8
Financial.....	10
Employment.....	11
Organizations.....	12
Recreation.....	13
Entertainment.....	16
Radio Stations.....	19
Faith & Ministry.....	20
Dining.....	23
Lodging.....	27
Transportation.....	28
Resources.....	29



VITAL STATISTICS

Population 41,949

Median Income \$56,573

Median Age 30.5

Average Annual High Temp 67.9 degrees

Average Annual Low Temp 39.4 degrees

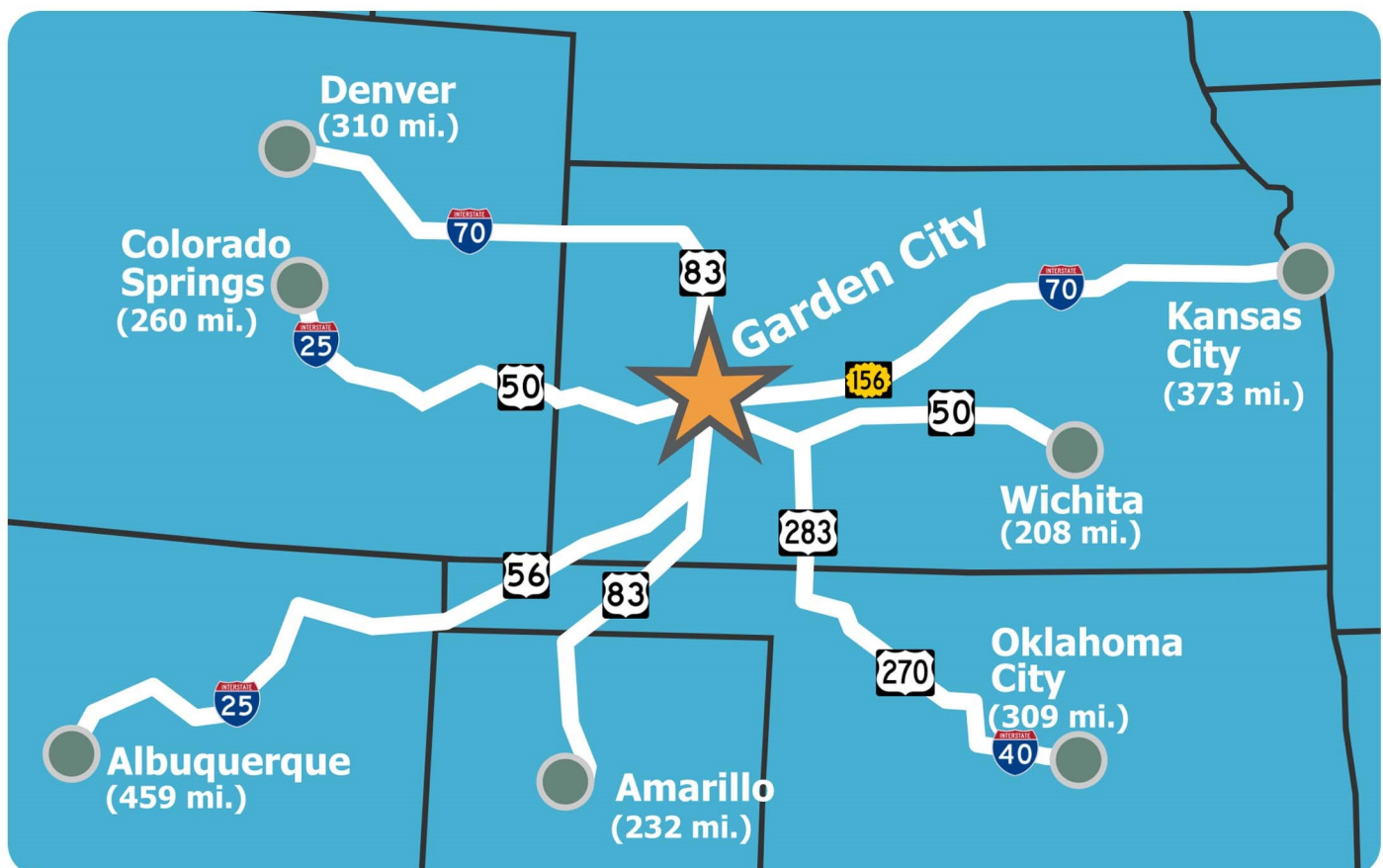
Average Daily Commute 13.9 minutes



FINNEY COUNTY
KANSAS



City of
Holcomb





there's no place like HOME

Finney County is home to many diverse cultural populations and provides an excellent environment for people of all ages. An important factor for the success of a community is its ability to grow, and Finney County is growing in many areas. Each year the number of available housing units and rental units has increased to meet the needs of current and incoming citizens.

median home value

Finney County	\$140,500
United States	\$287,148

real estate companies

Adams Real Estate	620-275-8955
American Home Real Estate, Construction & Development	620-275-6150
ARC Real Estate, Inc.	620-275-8200
Coldwell Banker The Real Estate Shoppe, Inc.	620-275-7421
Envision Real Estate	620-805-5001
Heritage Realty	620-275-0284
Hometown Real Estate	620-271-9500
MBA Real Estate	620-275-7440
RE/MAX	620-805-2616
TJ's Real Estate	620-271-4938
United Country-Rocking X Land Company	620-276-3525



Visit www.gardencitymls.com
for a complete list of available properties in
the area.

Looking for rentals?

Visit www.gardencitychamber.net for a list of landlords.



the youth are our **FUTURE**

Education in the Garden City area provides numerous opportunities for students and families to earn a quality education. From preschool to graduate level degree programs, Garden City supplies many educational opportunities.

K-12 education

public schools

School District:	457-Garden City
Total Student Enrollment:	7433
High School Graduation Rate:	81.2%
Mascot:	 Buffaloes
Class:	6A
Website:	www.gckschools.com

School District:	363-Holcomb
Total Student Enrollment:	993
High School Graduation Rate:	91.5%
Mascot:	 Longhorns
Class:	4A
Website:	www.usd363.com

private schools

School:	St. Dominic Catholic School
Grades:	PreK-6
Website:	www.st-dominic.org/school
School:	St. Mary Catholic School
Grades:	K-6
Website:	www.stmaryschoolgc.com

Holcomb High School



Garden City High School



early childhood resources

- Child Care Aware of Kansas
www.ks.childcareaware.org
- Kansas Children's Service League
www.kcsl.org 620-276-3232
- Russell Child Development Center
www.rcdc4kids.org 620-275-0291



EDUCATION

post secondary education

Garden City Community College was established on April 1, 1919, and is the oldest community college in Kansas. Today, GCCC is one of 19 community colleges across the state of Kansas.

GCCC is committed to producing positive contributors to the economic and social well-being of society. Course offerings include traditional classroom-based learning as well as online opportunities. Garden City Community College is host to premier technical training programs including John Deere Tech, welding, industrial maintenance, fire science, nursing, cosmetology and many more.

about GCCC

Total Student Enrollment:	2072
Mascot:	Broncbuster
Website:	www.gcccks.edu



outreach opportunities

available on GCCC campus

Fort Hays State University
Friends University
Newman University
University of Kansas





HEALTH & WELLNESS

Health and wellness is an important component of a great quality of life and the Garden City area strives to provide the best services available to our residents. Garden City and Finney County offer a full spectrum approach to health and wellness, making Garden City a regional center for healthcare.

St. Catherine Hospital

The Garden City area is served by **St. Catherine Hospital**, a member of the Centura Health family. St. Catherine was founded over 85 years ago by the Dominican Sisters and two local physicians. In addition to the hospital, St. Catherine and Centura Health offer the following services:

- **Express Wellness Urgent Care** (620) 287-2010
-Walk In Clinic, 1021 Fleming
- **Siena Medical Clinic** (620) 275-3700
-Family Practice, General Surgery, Internal Medicine, Nephrology, Orthopedics, Pediatrics, Podiatry, Walk In Clinic, Wound Care
- **Plaza Medical Center** (620) 276-8201
-Family Practice
- **Women's Clinic** (620) 275-9752
-Women's Health
- **Heartland Cancer Center** (620) 272-2579
-Complete cancer treatment facility

***Quality chiropractic, dental, vision and mental health services are also available locally.*

Pharmacies

Centura Health Pharmacy	(620) 271-3125
Dillons East	(620) 275-1967
Dillons West	(620) 275-0194
Plaza Pharmacy	(620) 276-8251
Sams Club	(620) 272-9023
Walgreens	(620) 275-4430
Walmart	(620) 275-7557
Walmart Neighborhood Market	(620) 765-7047

Fitness Centers

Core Fitness	(620) 277-7894
Elite Fitness 24/7	(620) 260-2104
Evolve Fitness	(620) 430-1064
Garden City Family YMCA	(620) 275-1199
KB's Sweat Station	(620) 277-3244
MM Fitness SWKS	(316) 201-7022
Project Fitness	(620) 271-0935
Zumba Fitness with Cristy	(620) 805-1245
Roots Juice Co. & Wellness Studio	(620) 260-2864

Additional Resources

LiveWell Finney County	(620) 765-1185
Genesis Family Health	(620) 275-4970
Compass Behavioral Health	(620) 276-7689
City on a Hill	(620) 276-0840
Finney County EMS	(620) 272-3822
Finney County Health Department	(620) 272-3600
Senior Center of Finney County	(620) 272-3620





taking care of YOU...

Full Service Spas

Gravity Wellness Center

1106 Campus Drive

(620) 260-2433

Massage Services

Flourish Herbs & Aromatherapy
Garden Massage
Hands On Massage
Natural Therapeutics
Shift Center
Sore Spot Massage Therapy

203 E. Laurel
1135 College Dr Ste 11
2001 Crestway Dr
802 Meadowview Dr
633 Briar Hill Dr
801 N Main St Ste 1

(620) 290-3416
(620) 805-6599
(620) 275-1935
(620) 640-5889
(620) 290-0507
(620) 805-1854

Nail/Lash/Brow Salons

Angel Nails & Spa/Nailicious
The Beloved
Fashion Nails
Hot Nails
Nail Style
Perfect 10 Nails
Serenity Nails & Spa

1502 Harding Ave
309 N. Main
519 W Mary St Ste 117
1502 Harding Ave
1660 Lareu St Ste D
2504 Johns St
406 N Main St

(620) 521-7411
(620) 287-8101
(620) 287-6037
(620) 276-3096
(620) 277-7920
(785) 432-3213
(620) 805-5393

Tanning Services

Afterglo
Lavish Tan

1601 E Mary St #3
201 N Main St

(620) 277-7811
(620) 276-6444





Barber Shops

Al's Barber Shop Five Points	1209 Buffalo Jones Ave	(620) 275-4644
Barber Enterprises Inc	701 Pats Dr	(620) 276-6238
California Classic Cuts	713 E Kansas Plaza	(909) 831-1499
Rybak's Barber Shop	325 N 7th St	(620) 640-3053
City Kuts Barber Shop	1502 E Harding Ave #5	(620) 805-5056
Exclusive Barber Shop	713 Kansas Plaza #2	(620) 805-6100
MJ's Barbershop	1135 College Dr J	(620) 805-6534
Culture Barbershop	621 N. Main	(620) 829-0130

Hair Salons

Another Look Salon and Spa	1902 E Mary St Ste A	(620) 275-5553
Color Works Salon & Spa	519 W Mary St #106	(620) 275-7900
Edge Salon	111 W Chestnut St	(620) 275-1200
Emmy's Hair Salon	206 N 7th St	(620) 271-0041
Glamour Salon	707 E Fulton St	(620) 277-7922
High Maintenance	1502 E Harding Ave #3	(620) 271-0944
Illusions Hair Salon	218 N Main St	(620) 276-3979
Imagen Total 519	101 W Mary St	(620) 805-6868
Infinity Salon	1135 College Dr Ste H	(620) 276-3502
Kim's Beauty Salon	1009 E Fulton St	(620) 276-6166
La Villa Salon	2001 E Spruce St	(620) 276-0776
Legends	109 W Grant Ave	(620) 276-6777
Lux Nails & Hair Salon	112 E Chestnut St	(620) 805-6044
Main Street Salon & Spa	523 N. Main St	(620) 276-3019
Nicole Austin Salon	602 N 7th St	(620) 275-4010
Nstyle Salon	317 N 8th St	(620) 276-4223
Pigtails	402 N. Henderson St (Holcomb)	(620) 277-2555
Queen Bee Salon	111 E Laurel St	(620) 290-7200
Rose Ann Beauty Shop	305 N 12th St	(620) 276-6659
San Juan Beauty Salon	506 W Fulton St	(620) 276-3615
Shear Style Salon	218 N Main St	(620) 287-8318
Signature's The Salon	519 W Mary St Ste 102	(620) 272-0255
SmartStyle Hair Salon	3101 E Kansas Ave	(620) 275-1723
Tammy & Company	101 E Walnut St	(620) 521-3099
The Room Salon	110 E Chestnut St	(620) 290-4227
Tranquility Salon & Spa	1103 E Kansas Plaza	(620) 276-3412
Ultra Beauty	1670 Larue St	(620) 276-3734



FINANCIAL RESOURCES

Whether your banking needs are personal or business related, or a combination of both, the Garden City area offers a wide variety of options.

Banks & Credit Unions

American AgCredit	1606 E Kansas Ave	(620) 275-4281
American State Bank & Trust	1901 E Mary St	(620) 271-0123
American State Bank & Trust- Holcomb	401 N Henderson St	(620) 277-0077
Bank of the West	1301 E Kansas Ave	(620) 276-7000
Commerce Bank	1111 Fleming St	(620) 276-5600
First National Bank- downtown	908 N Main St	(620) 276-6971
First National Bank- east location	2414 E Kansas Ave	(620) 276-1600
Garden City State Bank	1910 E Mary St	(620) 271-9700
Garden City Teachers Federal Credit Union	1601 E Kansas Ave	(620) 275-0131
Golden Plains Credit Union- main location	1714 E Kansas Ave	(620) 275-2151
Golden Plains Credit Union- west location	1504 Taylor Plaza	(620) 275-8187
Grant County Bank	511 N Campus Dr	(620) 277-3721
Landmark Bank	1007 N Main St	(620) 275-2166
Valley State Bank	1701 E Mary St	(620) 805-6700
Western State Bank- main location	1500 E Kansas Ave	(620) 275-4128
Western State Bank- downtown	602 N Main St	(620) 275-9269
Western State Bank- west location	409 W Kansas Ave	(620) 272-9916

***Quality insurance agencies and financial planning services are also available locally*





EMPLOYMENT RESOURCES

Garden City and the Finney County area offer a diverse collection of employment opportunities, ranging from the agriculture and manufacturing industry, to healthcare, retail, financial and professional services.

Major Employers

- 1 Tyson Foods
www.tysonfoodscareers.com
- 2 USD #457
www.gckschools.com
- 3 St. Catherine Hospital
www.centura.org/careers
- 4 Garden City Community College
www.gcccks.edu/employmentopp
- 5 Finney County
www.finneycounty.org/jobs

Finney County truly has something for everyone. Other area employers include the City of Garden City, Finney County, Sunflower Electric Power Corporation, Walmart, Sam's Club, Garden City Cooperative, Golden Plains Credit Union, Compass Behavioral Health and many more.

Additional Resources

- KansasWorks
www.kansasworks.com
- Western Kansas Jobs
www.westernksjobs.com
- Finney County Economic Development Corporation
www.ficoedc.com

We've got jobs!



GET INVOLVED

The Garden City area has many opportunities to get involved to serve your community while networking with other residents of Finney County.

Civic & Professional Organizations

American Legion	(620) 275-6875
Elks Lodge	(620) 276-3732
Fraternal Order of Eagles	(620) 276-7361
Kiwanis	@GardenCityKansasKiwanis
Lions Club	(620) 276-8552
Rotary Club of Garden City	(620) 276-3032
Veterans of Foreign Wars (VFW)	(620) 275-1825
Finney County Young Professionals	@FiCoYP on facebook
Garden City Board of Realtors	(620) 275-2698
Public Relations Society of Southwest Kansas	@PRSocietyofSWKS on facebook
Society of Human Resource Managers	www.shrmswks.com
Southwest Kansas Builders Association	@SWKBA19 on facebook

Volunteer Opportunities

Finney County has many volunteer opportunities available in addition to the civic and professional organizations.

Miles of Smiles	(620) 260-9997
Big Brothers Big Sisters of Finney & Kearny Counties	(620) 275-2424
Boys Scouts of America	(620) 275-5162
Girls Scouts of Kansas Heartland	(620) 276-7061
United Way of Finney County	(620) 275-1425
Finney County Humane Society	(620) 277-3725

*** This is not a comprehensive list of volunteer organizations. There are MANY options in Finney County available for those interested in volunteering their time. For more information on volunteer opportunities please email fcedc@ficoedc.com.*



PLAY *here.* . .

There is always something to do here - play a round of golf on our TWO nationally recognized golf courses, take a fitness class, or bike the Talley Trail. Neighborhood parks offer such amenities as playgrounds, skateboard facilities, jogging and walking paths, basketball courts, and soccer and baseball fields.

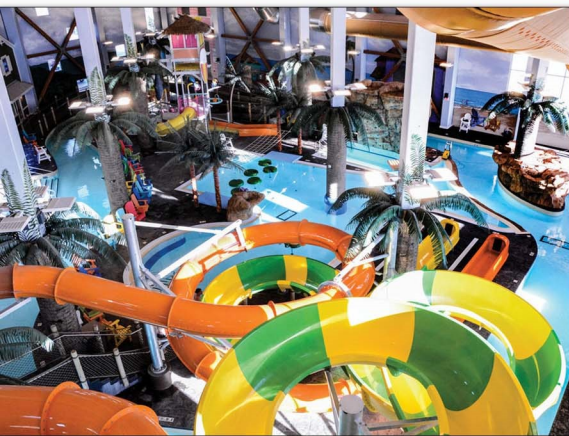
Finney County has made a concerted effort to constantly be on the lookout for things to enhance the quality of life in the area.

Lee Richardson Zoo

Lee Richardson Zoo is one of the area's premier zoos and is AZA certified. With a world class staff, the facility offers family friendly events for people of all ages: Giraffe Encounters, hands-on educational opportunities and behind the scenes sneak peeks. Did we mention that it's FREE ADMISSION?!?!



Talley Trail



Parrot Cove Indoor Water Park

Garden City is home to the only indoor water park between Denver and Kansas City. You'll find 36,000-square-feet of fun at Parrot Cove! Splash down one of the four water slides, climb the rock wall, lounge in the lazy river, and much more! There is something for everyone at Parrot Cove! Other attractions include splash zone, wading pool, plunge area and lily pad cross. With daily specials, it is sure to be fun for the whole family.

Garden City Wind Baseball

In 2015, Garden City became host city to the Garden City Wind Professional Baseball team. Establishing its home in the historic Clint Lightner Field, the Wind take the field numerous days per week from May and running through July.





Buffalo Dunes Golf Course

Buffalo Dunes Golf Course was ranked as the number one municipally-owned golf course in Kansas by Golf Digest magazine, and has been recognized by Golf Magazine and Travel & Leisure Magazine as “best places to play” and “best bang for your buck.” Challenging, enjoyable and affordable, Buffalo Dunes is nestled among the historic sand hills six miles south of Garden City. Southwest Kansas offers a 4-season climate, and golf can be played throughout the year, weather permitting. Opened in 1976 on land donated by E.C. Brookover Sr., Buffalo Dunes is one of the host courses to the prestigious Southwest Kansas Pro-Am every August. Among the golfing greats who have walked the fairways of the Dunes are U.S. Open champions Steve Jones and Lee Janzen, and British Open champions Tom Weiskopf and Stewart Cink. Beautifully conditioned, the Dunes has bluegrass fairways, well-maintained bentgrass greens and native grasses that challenge the golfer and provide a memorable experience. The course can play at differing lengths based upon a player’s skill level, with yardages from 5,452 to the championship tees of 6,806 yards.



Sandsage Bison Range

Formerly known as the Finney Game Refuge, this wildlife area is managed primarily for its herd of more than 100 bison. It is divided into three large pastures. For safety, the public is not allowed to enter the areas containing the bison unescorted. Access is limited, and prior arrangements need to be made for a tour. Call the Friends of the Sandsage Bison Range and Wildlife Area at (620) 276-9400 for information on bison tours as well as the June wildflower tour and “Breakfast on the Prairie.”

Garden Rapids at The Big Pool

The new, state-of-the-art waterpark opened May 29, 2021 and sits on the former location of the historic Big Pool. Amenities include a lazy river, kids play area, 10-lane competition pool, 3 diving boards, a “SlipStream” slide and 2 “Fly Tyme” slides. The park is open Memorial Day through mid-August and daily admission is \$3 per person.





Horsethief Reservoir

Horsethief Reservoir is located just 45 minutes east of Garden City on Highway 156. Whether your interest lies in fishing, boating, camping, or just being outdoorsy, Horsethief has something for everyone. In operation since June 2010, the park boasts over 1600 acres of gorgeous Kansas prairie and 450 acres of water. Park amenities include:



- 55 utility campsites
- Unlimited primitive campsites
- Playground
- Basketball court
- Horseshoe pits
- Swimming area
- Cabin rentals
- On-site park office
- Lodge & open-air pavilion
- Disc golf course
- Hiking & biking trails
- Hunting (in season)
- Various special events throughout the year

horsethiefreservoir.com

19005 SW 156 Highway
Jetmore, KS 67854
(620) 253-8464

Lake Scott State Park is located approximately 46 miles north of Garden City, just west of US Highway 83, and is listed by National Geographic as one of the country's 50 must-see state parks. The 1,020 acre park surrounds the 100 acre, spring-fed Scott State Fishing Lake, and a 160 acre wildlife area lies west of the park.

Over 26 archeological sites have been documented in and around the park, making it one of the most historic locations in Kansas. Scott State Park is home to El Cuartelejo, the northernmost known Native American pueblo. About 1 mile south of the park is Battle Canyon, the location of the last Native American battle in Kansas.

Lake Scott State Park



Park amenities include:

ksoutdoors.com

101 West Scott Lake Drive
Scott City, KS 67871
(620) 872-2061

- Camping
- Boating
- Swimming area
- Hiking
- Hunting (in season)
- Fishing
- Nature trails
- Horseback riding
- Horse camp

something for EVERYONE

Finney County is home to a very active Arts community. Looking for a play? Art gallery? Festival? You'll find it here!

Garden City Arts	www.gardencityarts.org
Mercer Gallery	www.gcccks.edu
Tumbleweed Festival	www.tumbleweedfestival.com
Southwest Kansas Live on Stage	www.liveonstagegardencity.org

Tumbleweed Festival



Southwest Kansas Live on Stage



Whether you are looking for major national retailers or hometown favorites, the Garden City area has just what you're looking for. The newly developed Schulman Crossing features over 300,000 sq ft of retail space and features major retailers like TJ Maxx, Ulta and Dick's Sporting Goods.

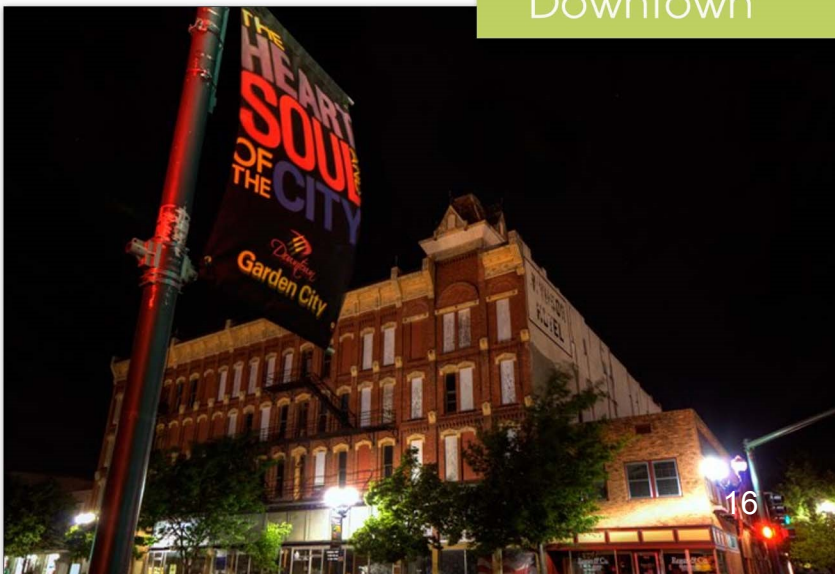
Mercer Gallery



Schulman Crossing

Head just a bit farther west and check out our great downtown district with a fabulous coffee house, various restaurants and many niche shops. Plus, Main Street is the home to Stevens Park where numerous concerts and festivals are held throughout the year.

Downtown

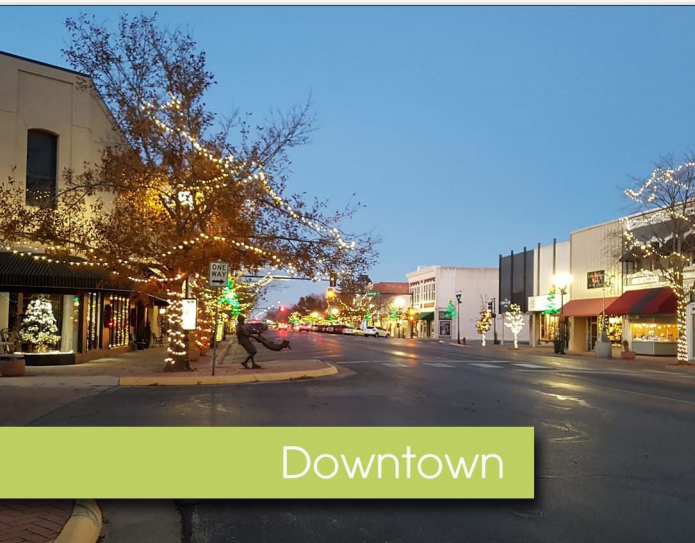




SHOP *till you drop...*



Schulman Crossing



Downtown

National Retailers

Advance Auto Parts	O'Reilly Auto Parts
AutoZone	Orscheln's Farm & Home
Cato Fashions	Petco
Claire's	Riddle's Jewelry
Dick's Sporting Goods	Ross Dress for Less
Dillon's Food Stores	Sams Club
Dollar General	Staples
Dollar Tree	Target
Famous Footwear	The Buckle
Five Below	TJ Maxx
GameStop	Tractor Supply
GNC	Tradehome Shoes
Harbor Freight	True Value
Hibbett's Sporting Goods	Ulta
Hobby Lobby	Walgreens
Home Depot	Wal-Mart
Maurice's	Wal-Mart Neighborhood Market
Menard's	Westlake Ace Hardware
Napa Auto Parts	
Old Navy	

Downtown Retailers

AJ's Graphics
 Antique & Comic Shoppe
 B&J's Collectibles
 Brown's Shoe Fit
 Central Cup Coffee House
 Coleen's Trophies & Gifts
 Escape the Clock
 Flourish Herbs & Massage
 Garden City Arts
 Gipson Jewelers
 Harvest Pantry
 Janet Doll Goldsmith
 J2 Scrubs

Kep's Menswear
 Klaus Wood Pellets & Outdoor Living
 Linenberger Jewelry
 Little Britches/Moodz
 Patrick Dugan's Coffee House
 Porter's "A Beautiful Mess"
 Regan Jewelers
 Roots Juice & Wellness
 SageHouse Bath & Body
 The Corner on Main
 The Good Sport
 Tumbleweed Thrift Boutique



helpful links

Beef Empire Days	www.beefempiredays.com
Garden Rapids at The Big Pool	www.garden-city.org
Buffalo Dunes Golf Course	www.buffalodunes.org
City Parks	www.garden-city.org
Finney County Convention & Visitors Bureau	www.visitgck.com
Finney County Historical Museum	www.finneycounty.org
Garden City Arts	www.gardencityarts.org
Garden City Downtown Vision	www.gcdowntown.com
Garden City Recreation Commission	www.gcrec.com
Garden City Wind	www.gardencitywind.com
The Golf Club at Southwind	www.tgcsouthwind.com
Greater Garden City	www.greatergc.com
Lee Richardson Zoo	www.leerichardsonzoo.org
Mercer Gallery	www.gcccks.edu
Parrot Cove Water Park	www.parrotcovewaterpark.com
Sandsage Bison Range	www.naturalkansas.org/sandsage.htm
Southwest Kansas Live on Stage	www.liveonstagegardencity.org
Tumbleweed Festival	www.tumbleweedfestival.com
YMCA of Southwest Kansas	www.ymcaswkansas.org





ON AIR

News/Talk

104.9 FM
550 AM
880 AM
1030 AM
1210 AM
1240 AM
1270 AM
1310 AM
1370 AM

Sports

99.9 FM
102.9 FM
1410 AM
1550 AM

Public Radio

91.1 FM

Religious

89.9 FM
99.1 FM
100.5 FM
103.9 FM
107.9 FM

Spanish

91.9 FM
92.9 FM
101.5 FM
105.9 FM

Country

96.3 FM
97.3 FM
100.9 FM
790 AM
920 AM

Top 40

93.9 FM
98.1 FM

Adult Contemporary

94.5 FM
1290 AM

80's

101.7 FM

Classic Hits

95.5 FM
1340 AM
1420 AM



AREA churches

Apostolic

The Apostolic Church
3102 Schulman Ave
(620) 272-4780

Assembly of God

First Assembly of God Church
702 Campus Dr
(620) 276-3371
www.firstassemblygc.com

Assembly of God Church
1311 New York Ave
(620) 275-7667

Baptist

Faith Baptist Church
1455 N 16 Mile Rd
(620) 275-7350
www.faithbaptist-gc.org

Fellowship Baptist Church
506 N 1st St
(620) 275-5304

First Baptist Church
1005 N 11th St
(620) 275-5266

First Southern Baptist Church
2708 N 3rd St
(620) 276-7859
www.fsbcgc.com

Iglesia Bautista del Sur
1107 W Olive
(620) 276-3138

Iglesia Bautista Nueva Vida
506 N 1st St
(620) 275-5304

Second Baptist Church
1107 N Main St
(620) 276-2805

Western Kansas Baptist Association
1202 A St
(620) 275-7223

The First Baptist Church of Holcomb
403 Emmanuel Dr

Buddhist

Vietnamese Buddhist Association
910 E Spruce St
(620) 271-0272

Catholic

St. Dominic Catholic Church
615 JC St
(620) 276-2024
www.st-dominic.org

St. Mary Catholic Church
509 St John St
(620) 275-4204
www.stmarygc.com

Church of the Brethren

Church of the Brethren
505 N 8th St
(620) 276-7391
www.gardencitycob.org

Episcopal

St. Thomas' Episcopal Church
710 N Main St
(620) 276-3173



Jehovah's Witness

Kingdom Hall of Jehovah's Witness
210 E Prospect
(620) 275-4372

Lutheran

St. James Lutheran Church, ELCA
1608 Belmont Pl
(620) 275-5108
www.stjameslutherangardencity.com

Trinity Lutheran Church
1010 Fleming St
(620) 276-3110
www.tlcgck.org

Mennonite Brethren

Garden Valley Church
1701 N 3rd St
(620) 276-7410
www.gardenvalleychurch.com

Methodist

Evangelical United Methodist Church
614 N 13th St
(620) 276-3800

First United Methodist Church
1106 N Main St
(620) 275-9171
www.fumcgc.com

Mormon

Church of Jesus Christ of Latter-Day Saints
619 Mary St
(620) 275-4305

Nazarene

Church of the Nazarene
11th & Elizabeth
(620) 872-3181

Garden City Church of the Nazarene
2720 Campus Dr
(620) 275-4278
www.gcnaz.com

Orthodox Christian

Three Hierarchs Orthodox Christian Church
2009 N Main St
(620) 271-0811
www.antiochian.org

1st Pentecostal Church
216 N 9th St
(620) 253-7481

Iglesia Pentecostal Jesucristo
3050 N 8th St
(620) 275-0449

Presbyterian

The Presbyterian Church
1719 Texas St
(620) 275-9141
www.pcgardencity.org

Seventh-Day Adventist

Iglesia Adventista del Septimo Dia
1801 W Kansas Ave
(620) 275-7200

Seventh-Day Adventist Church
2710 N Fleming St
(620) 275-9356
gardencity22.adventistchurchconnect.org

United Church of Christ

Community Congregational Church
710 N 3rd St
(620) 275-5623



Nondenominational

Bible Christian Church
1404 E Mary St
(620) 276-8356
www.biblechristiangc.com

Church of Christ
1715 Pioneer Rd
(620) 276-2500
www.gcchurchofchrist.com

Iglesia Cristiana Apsotoles y Profetas
2202 W Jones
(620) 521-3798

Cornerstone Church
2901 N 8th St
(620) 275-5965
www.cornerstonepeople.org

First Christian Church
306 N 7th St
(620) 275-5411
www.fccgcks.org

Grace Bible Church
2595 Jennie Barker Rd
(620) 275-6701

Journey to the Cross
1205 W Maple St
(620) 521-1949
www.journeytothecrossgc.org

Misión Cristiana Elim
2510 E Schulman Ave
(620) 275-4598

New Life Community Church
3101 Campus Dr
(620) 272-6198
www.newlifechurchgc.org

Pierceville Federated Church
203 E Avenue A
(620) 335-5228

Plymell Union Church
25 W Plymell Rd
(620) 276-6160

Prairieview Church of the Brethren
(620) 267-6481

Word of Life Church
3004 N 3rd St
(620) 276-3825
www.thewolc.org



let's EAT!

American

Applebee's
Buffalo Wild Wings
Golden Corral Buffet
Hanna's Corner
Jax Sports Grille
Pinky's Grilled Cheestro
Old Chicago
Time Out
Thirsty Dawg
Traditions Soda & Sandwich
Ward's Garden Café

3030 E Kansas Ave
1530 Lareu St 100
1727 E Kansas Plaza
2605 N Taylor Ave
1907 E Mary St
2204 E. Kansas Ave Ste 1
1010 Stone Creek Dr.
1319 N Taylor Ave
301 E Jones Ave (Holcomb)
121 Grant Ave
2703 N Taylor Plaza

Asian

Dragon Express
Jade Buffet
Ninja Sushi & Steakhouse
Osaka Steak & Sushi House
Pho Hoa
Saigon's Corner
Thai Arawan

118 N Taylor Ave
1505 E Kansas Ave
416 N Main St
1660 Lareu St
713 E Fulton St
406 E Kansas Ave
902 E Fulton St

BBQ

Plank's BBQ
Rib Crib

912 E Fulton St
1750 Lareu St

Breakfast

IHOP
Hanna's Corner
Time Out

2507 E Crestway Dr
2605 N Taylor Ave
1319 N Taylor Ave

Brewpub

Flat Mountian Brewhouse

207 N Main St

Coffee

Central Cup
Patrick Dugan's
Scooters Coffee
Scooters Coffee
Starbucks

517 N 8th St
301 N Main St
2517 N Campus Dr
601 Kansas Ave
2401 E Kansas Ave





Dessert

Baskin Robbins
 Baskin Robbins
 Below Zero
 Dairy Queen
 La Michoacana
 Loving's Cakes
 Paletteria Tarahumara
 Paletteria Tarahumara
 Penguin Rolled Ice Cream
 Wam's Tropical Sno

1521 E Fulton St
 2505 S Fleming St
 108 W Kansas Ave
 114 W Kansas Ave
 1014 W Mary St
 210 E Spruce St
 1101 N Taylor Ave
 4003 E Highway 50 Suite A
 1530 Lareu St Ste B
 2410 N Cherokee Rd

Donuts

Crispy Donuts
 Daylight Donuts

511 W Kansas Ave
 201 E Kansas Ave

East African

Selam East African Restaurant

1110 Campus Dr

Fast Food

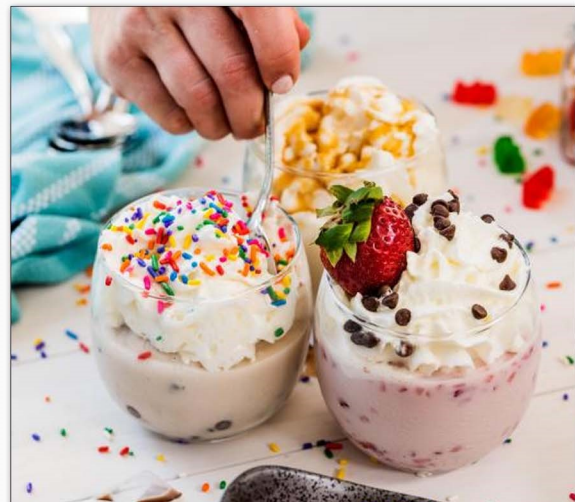
Arby's
 Burger King
 Burger King
 Freddy's
 Jimmy John's
 KFC
 Long John Silver's
 McDonald's
 McDonald's
 Popeyes Louisiana Kitchen
 Sonic Drive-In
 Sonic Drive-In
 Sonic Drive-In
 Subway
 Subway
 Subway
 Subway
 Subway
 Taco Bell
 Taco Johns
 Wendy's

1719 E Kansas Plaza
 1601 Taylor Plaza
 2415 E Kansas Ave
 3112 E Kansas Ave
 503 E Kansas Ave
 2208 E Kansas Ave
 205 E Kansas Ave
 1613 E Kansas Plaza
 1106 Taylor Plaza
 3108 E Kansas Ave
 1313 E Kansas Ave
 1212 Buffalo Jones Ave
 1500 N Jones Ave (Holcomb)
 210 E Kansas Ave
 3101 E Kansas Ave
 1320 N Taylor Ave
 3285 E US 50
 1500 N Jones Ave
 2408 E Kansas Ave
 2875 E Schulman
 1403 E Kansas Ave

Food Truck

Dragon Wagon
 iToko's Grill
 Nature's Way
 Pinky's Grilled Cheestro
 Tacos El Guanajuato

facebook.com/dragonwagonks
 2620 N Taylor Ave
 719 E Kansas Ave
 facebook.com/PinkysGC
 50 S Farmland Rd





Italian

Napoli's

2215 S Air Service Dr

Latin American

La Playa Dorada
Mariscos Puerto Nuevo212 W Fulton St B
1107 N Taylor Ave

Mexican

Carniceria Garcia
Casa Mariachi
El Agave
El Canelo Tacos y Mariscos
El Clamatazo
El Paisa
El Patron
El Rancho
El Zarape
La Cabana
La Estrella
Las Margaritas
Sol y Luna
Tacos El Tapatio
Taco Salinas
Tacos La Carreta
Taqueria El Compa
Tequilas622 N 8th St
125 W Pine
511 W Kansas Ave
1110 Campus Dr
707 E Fulton St
3101 W Jones Frontage
606 W Fulton St
305 N Main St (Holcomb)
2501 E Fulton
110 W Kansas Ave
305 E Kansas Ave
301 N Main St
1604 Buffalo Jones Ave
1203 E Fulton St
306 W Fulton St
118 W Kansas Ave
519 W Mary St #111
1715 E Kansas Ave

Pizza

Domino's
Little Caesars
Papa John's
Pie Five
Pizza Hut
Pizza Hut2312 E Kansas Ave
1810 E Kansas Ave
1016 N Main St
1110 Fleming St
301 E Kansas Ave
1627 N Taylor Ave

Steakhouse

Garden City Steakhouse
Baron's Steakhouse & Bar1301 E Fulton St
1911 E Kansas Ave

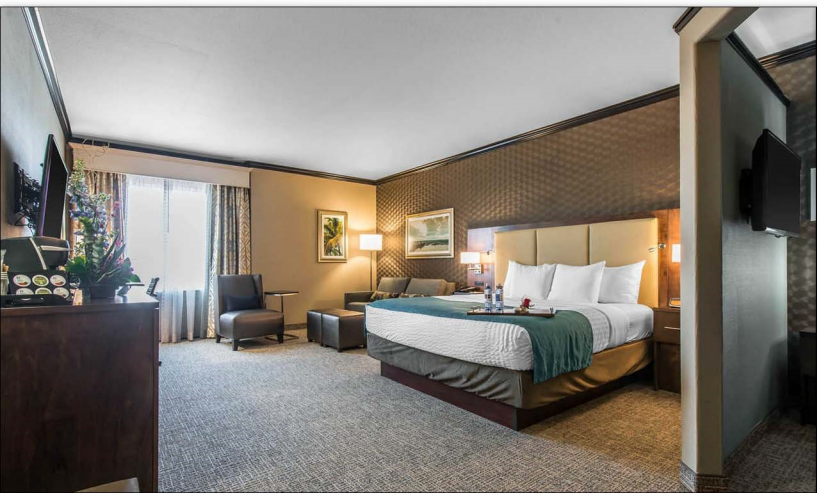


STAY *awhile*...

The Finney County area boasts a wide array of lodging facilities. Whether your needs are short term or for a longer period of time, business or pleasure, we hope you enjoy your stay!

Sunnyland Bed & Breakfast	(620) 276-0500
America's Best Value Inn	(620) 275-5095
AmericInn Lodge & Suites	(620) 272-9860
Best Western Plus Emerald Inn & Suites	(620) 277-7100
Clarion Inn & Conference Center	(620) 275-7471
Comfort Inn	(620) 275-5800
Continental Inn	(620) 276-7691
Flamingo Motel	(620) 276-7601
Garden City Inn	(800) 741-5072
Hampton Inn Garden City	(620) 272-0454
Holiday Inn Express Hotel & Suites Garden City	(888) 465-4329
Magnuson Hotel Red Baron	(620) 275-4164
Marriott TownePlace Suites	(855) 347-6717
National 9 Inn	(877) 675-0677
New Sunflower Inn Suites	(620) 276-2387
Sleep Inn & Suites And Conference Center	(620) 805-6535
The Heritage Inn & Suites	(620) 277-7477

For additional information on lodging facilities in the area, please visit www.visitgck.com.





DESTINATION: *anywhere*

Garden City and Finney County have ample options for travel, whether it be business or pleasure. With many affordable choices available, Garden City truly is a hub for to get to wherever you need to go.

Air Travel

Garden City Regional Airport offers flights to Dallas/Ft. Worth Airport (DFW) through American Airlines serviced by Envoy Air. For reservations or flight information, please visit www.aa.com or call 1-800-433-7300.

Private plane services are also available. Please visit www.fly2gck.com for more information.

Amtrak

The Southwest Chief runs daily between Chicago and Los Angeles, with a stop in Garden City, through the vast expanse of the American West. The full trip travels across eight states — past wheat fields and ranches, missions and pueblos, mountains and deserts. You'll see spectacular landscapes and pristine vistas not visible from interstate highways. Visit www.amtrak.com for ticket information.

Car Rental

A OK Car Rental	(620) 275-4291
Dollar Rent A Car	(620) 276-7302
Enterprise Rent-A-Car	(620) 276-4015
Hertz	(620) 276-6884





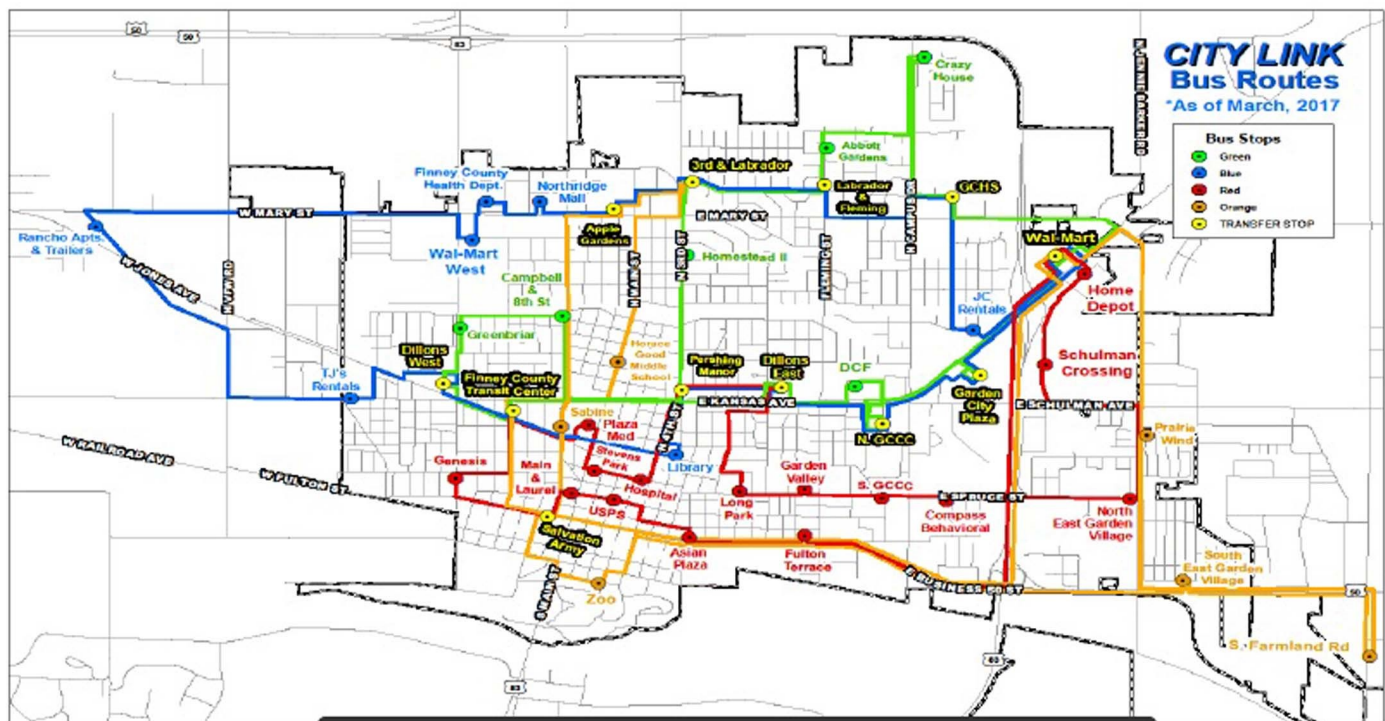
City Link

City Link, Garden City's public transit system, operates on a daily basis. The bus system offers transportation to 65 stops around town.

Green Route		Red Route		Orange Route		Blue Route	
Every Hour (6:00 a.m. - 6:00 p.m.)		Every Hour (6:00 a.m. - 6:00 p.m.)		Every Hour (6:00 a.m. - 6:00 p.m.)		Every Hour (6:00 a.m. - 6:00 p.m.)	
FCT Center (Transfer)	:00	FCT Center (Transfer)	:00	FCT Center (Transfer)	:00	FCT Center (Transfer)	:00
Dillons West	:03	Plaza Medical	:03	Horace Good Middle School	:03	Library	:03
Greenbriar	:05	Stevens Park north side	:05	Third & Labrador (Transfer)	:06	Pershing Manor	:06
Campbell & 8th Street	:07	Hospital south side	:06	Apple Garden	:10	Dillons East	:09
Pershing Manor	:10	Pershing Manor	:10	Sabine House	:14	GCCC (North)	:12
Homestead II H & R	:12	Dillons East	:13	Salvation Army	:16	G.C. Plaza by GNC	:17
Third & Labrador (Transfer)	:15	Harold Long Park	:17	Zoo	:18	Wal-Mart	:21
Labrador & Fleming	:17	Garden Valley Retirement	:18	Wal-Mart	:31	JC Rentals	:23
Abbot Gardens	:18	GCCC (South)	:19	Prairie Wind	:35	GCHS	:25
Crazy House	:22	Community Support Services	:21	South Farmland Road	:39	Labrador & Fleming	:27
GCHS	:25	East Garden Village (North)	:24	East Garden Village	:44	Apple Gardens	:32
Wal-Mart	:31	Schulman Crossing	:26	FCT Center (Transfer)	:53	Northridge Mall	:34
G.C. Plaza by GNC	:35	Home Depot	:28			Finney County Health Dept	:35
GCCC (North)	:38	Wal-Mart	:31			Wal-Mart West	:37
SRS	:41	East Fulton Terrace	:38			Rancho Apts. & Trailers	:41
Dillons East	:43	Asian Plaza	:41			TJ's Rentals W. Kansas Ave	:45
FCT Center (Transfer)	:48	Post Office/Recreation Center	:44			Dillons West	:48
		Main & West Laurel	:46			FCT Center (Transfer)	:51
		Salvation Army on Fulton	:48				
		Genesis	:50				
		FCT Center (Transfer)	:52				

Arrive at the bus stop early.
Buses depart promptly at
posted times.

All Routes depart every hour on the hour from 6:00 a.m. - 6:00 p.m.



General Fare	\$1.00
Students (with valid ID)	\$0.50
Children 5 and Under	Free (with paying passenger)
General Public Monthly Pass	\$30.00

*Discounted fares are available. Please contact Finney County Transit at (620) 272-3626.



RESOURCES

Electric

City of Garden City (620) 276-1100
Wheatland Electric (620) 275-0261

Gas Service

Black Hills Energy (888) 890-5554

Water/Sewer

City of Garden City (620) 276-1100
City of Holcomb (620) 277-2265

Trash Collection

City of Garden City (620) 276-1100
City of Holcomb (620) 277-2265
Northend Disposal Services (620) 227-3371
Waste Connections (620) 275-4421

Phone

AT&T (844) 723-0252
Cox Communications (866) 684-7142

Cable TV

AT&T (844) 723-0252
Cox Communications (866) 684-7142

Internet

AT&T (844) 723-0252
Cox Communications (866) 684-7142
United Wireless (620) 276-4378
Verizon Wireless (620) 276-6776
Wheatland Broadband (866) 872-0006

Wireless Service

AT&T (620) 272-0383
Cricket Wireless (620) 805-5330
United Wireless (620) 276-4378
Verizon Wireless (620) 276-6776





County Government

Finney County
311 N 9th St
Garden City, KS
(620) 272-3500
www.finneycounty.org

City Government

City of Garden City
301 N 8th St
Garden City, KS
(620) 276-1160
www.garden-city.org

City of Holcomb
200 N Lynch St
Holcomb, KS 67851
(620) 277-2265
www.holcombks.com

Law Enforcement

Finney County Sheriff's Office
304 N. 9th St
Garden City, KS
(620) 272-3700
www.finneycounty.org

Garden City Police Department
304 N 9th St
Garden City, KS
(620) 276-1300
www.gcpolice.org

Holcomb Police Department
200 N Lynch St
Holcomb, KS
620-277-2761
www.holcombks.com



Emergency Services

Finney County EMS
803 W Mary St
Garden City, KS
(620) 272-3822
www.finneycounty.org

Garden City Fire Department
302 N 9th St
Garden City, KS
(620) 276-1140
www.garden-city.org

Holcomb Community Fire Department
200 N Lynch St
Holcomb, KS
(620) 277-2250
www.holcombks.com

THANK YOU

Thank you for choosing Finney County as the place you call home. This guide is provided to you by Finney County Economic Development Corporation and the Finney County Workforce Connection.

If you have a business in Finney County that is not listed in the guide, please contact fcedc@ficoedc.com and we will get it added.



Finney County
Economic Development Corporation

114 W. Pine
Garden City, KS 67846
(620) 271-0388
www.ficoedc.com
fcedc@ficedc.com

Mission

The Finney County Economic Development Corporation was created for and is committed to the continual improvement of the economic quality of life in the Finney County area.

Goals

Promote, aid, develop, and advance new business and industry in Finney County, providing skilled, high-wage primary jobs for the welfare of the community.

Assist existing primary business and industry with growth and expansion plans through a proactive business retention program

Create a business environment conducive to entrepreneurship by providing financial support and technical assistance to primary businesses in collaboration with partner agencies.



The Finney County Economic Development Corporation works in partnership with local community organizations to create a community-wide campaign to recruit, enhance, and retain a sustainable workforce in the Finney County region. This initiative is known as the **Finney County Workforce Connection**. For more information, please visit www.ficoedc.com/workforce.